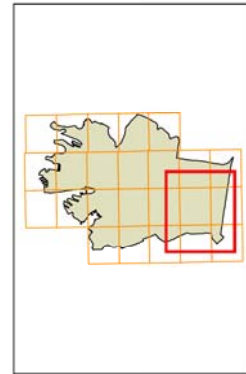


# Sydney Development Control Plan 2012

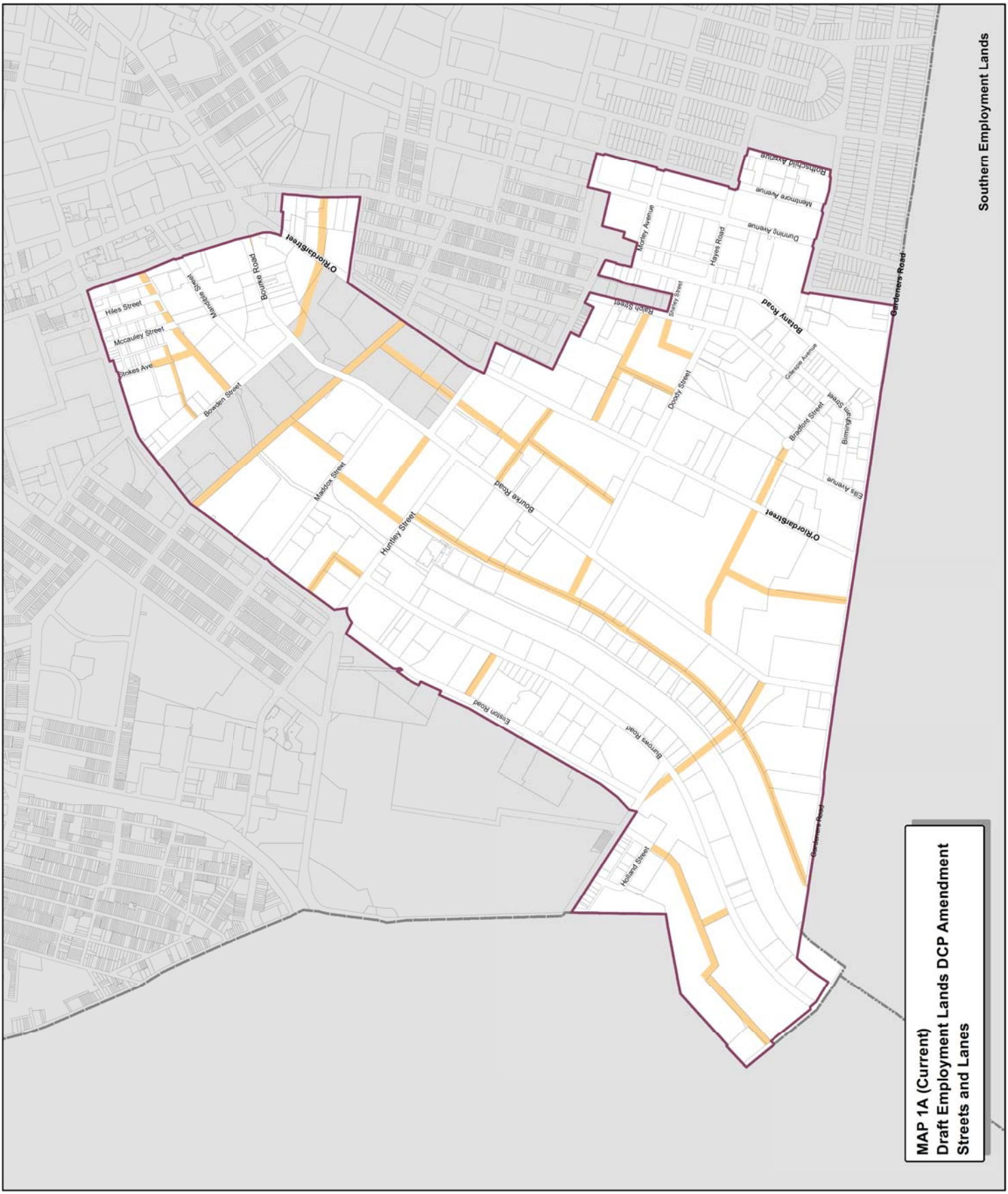


## Streets and lanes map

- Legend**
- Employment Lands Strategy boundary
  - Proposed streets
  - Proposed lane
  - Central Sydney existing lane
  - Land excluded from this DCP



Copyright ©2012 City of Sydney Council. All Rights Reserved.  
 Preparation: UJA, Zone 56  
 Author: UJAA  
 Date: 02/04/12  
 and the publisher and/or contributor accept no responsibility  
 for any errors or omissions. While all care has been taken to ensure a high  
 quality product, the City of Sydney Council does not accept any  
 liability for any errors or omissions. No part of this map may be  
 reproduced without written permission.

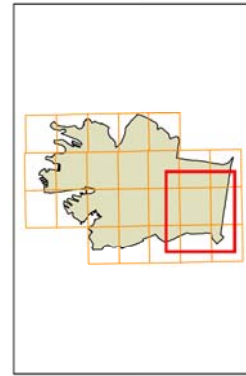


**MAP 1A (Current)**  
**Draft Employment Lands DCP Amendment**  
**Streets and Lanes**

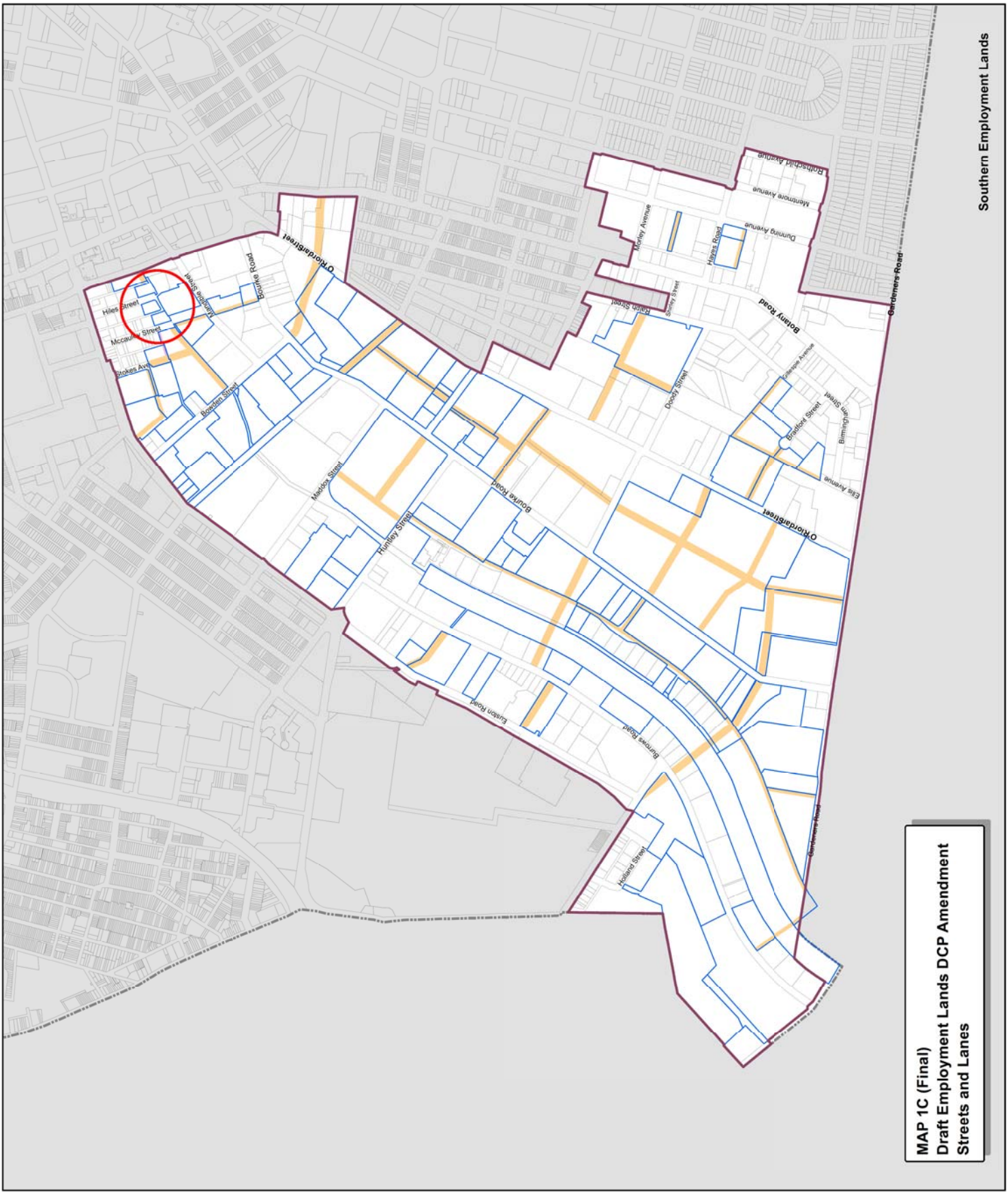


**Streets and lanes map**

- Legend**
- Employment Lands Strategy boundary
  - Affected sites
  - Proposed street
  - Proposed lane
  - Central Sydney existing lane



Copyright ©2012 City of Sydney Council. All Rights Reserved.  
 Preparation: U3A, Zone 05  
 Sydney, NSW  
 Copyright ©2012 Land and Property Information, All Rights Reserved.  
 and the publisher and/or contributor accept no responsibility  
 for any errors or omissions. While all care has been taken to  
 ensure the accuracy of the information, the City of Sydney  
 Council and its officers accept no liability for any errors or  
 omissions. All rights reserved. No part of this map may be  
 reproduced without written permission.



**MAP 1C (Final)**  
**Draft Employment Lands DCP Amendment**  
**Streets and Lanes**

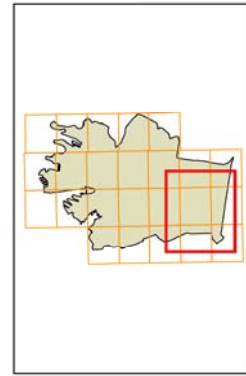




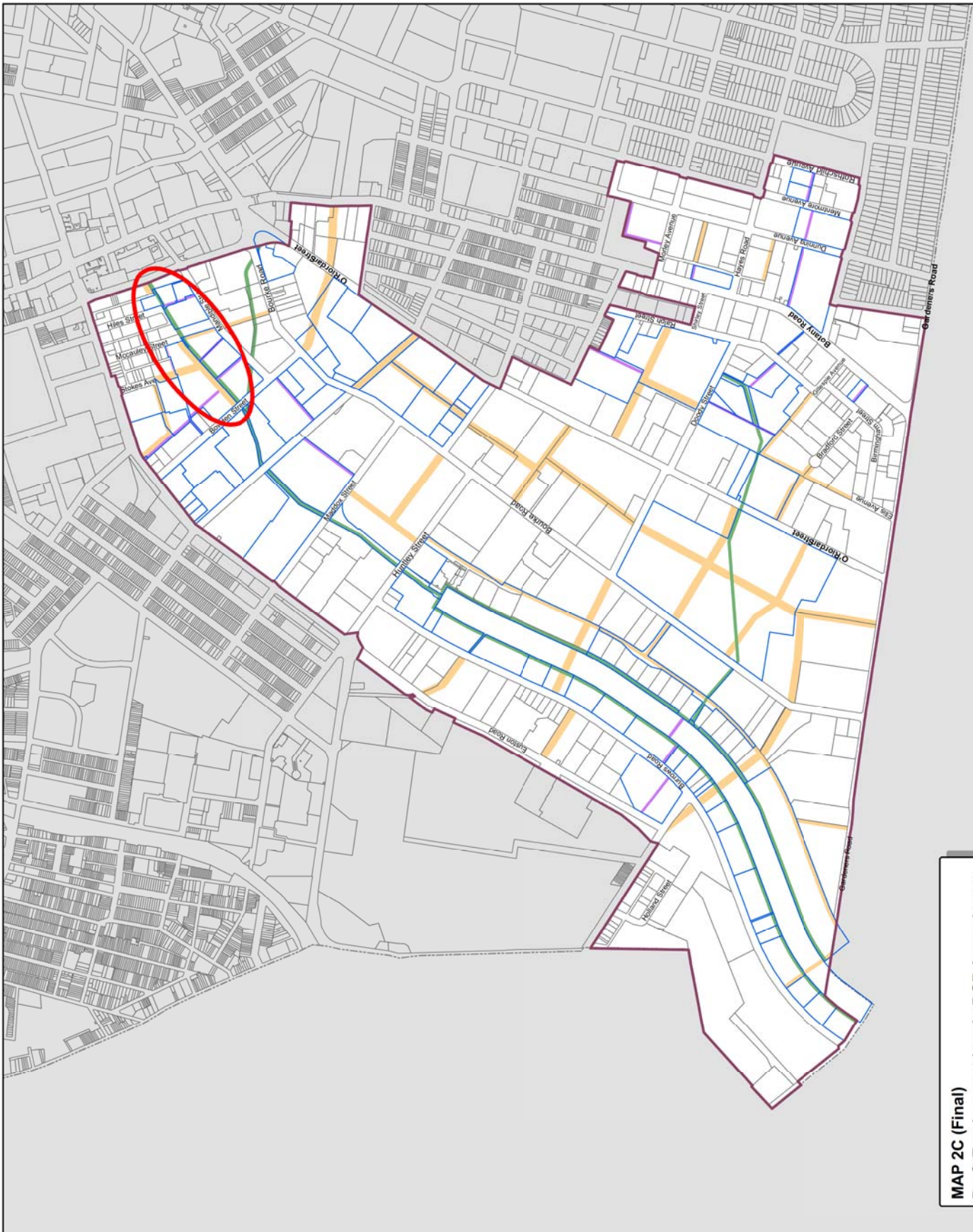


**Through site links map**

- Legend**
- Employment Lands Strategy boundary
  - Affected sites
  - Proposed streets
  - Proposed lane
  - Through Site Links**
  - Proposed through site link
  - DCP Liveable Green Network



Copyright ©2014 City of Sydney Council. All Rights Reserved.  
 Projection: MGA Zone 56  
 Datum: GDA94  
 Prepared by: PLUD  
 Prepared for: PLUD  
 File: D:\CityPlan\GIS\DCP\2012\Map\DCP2012\Map\DCP2012\_ThroughSiteLinks\_LandUse  
 Date of any map amendments: No part of this map may be reproduced without written permission.



**MAP 2C (Final)**  
**Draft Employment Lands DCP Amendment**  
**Through Site Links**

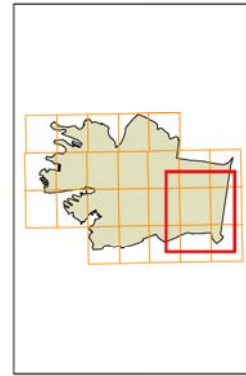


# Sydney Development Control Plan 2012

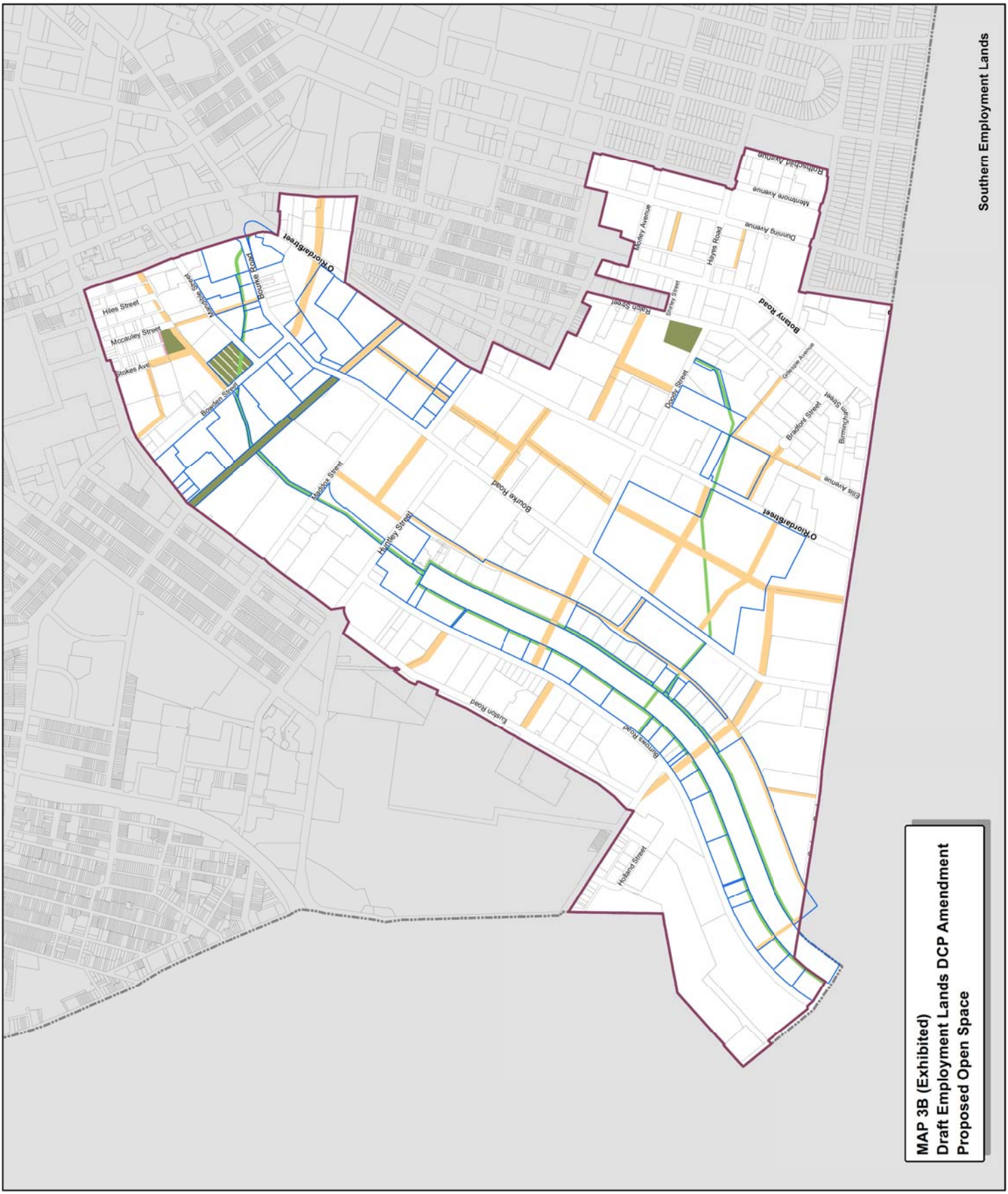


## Proposed open space map

- Legend**
- Employment Lands Strategy boundary
  - Affected sites
  - Required open space
  - Detention (open space)
  - Liveable Green Network (linear park)
  - Proposed streets



Copyright ©2014 City of Sydney Council. All Rights Reserved.  
 Preparation: URS | Zone 56  
 Sydney, NSW  
 and the publisher and/or contributor accept no responsibility  
 for any errors or omissions. While all care has been taken to  
 ensure the accuracy of the information, the City of Sydney  
 Council and its officers do not warrant the accuracy of the  
 information. No part of this map may be reproduced  
 without written permission.



**MAP 3B (Exhibited)**  
**Draft Employment Lands DCP Amendment**  
**Proposed Open Space**

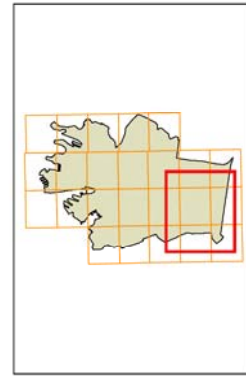


# Sydney Development Control Plan 2012

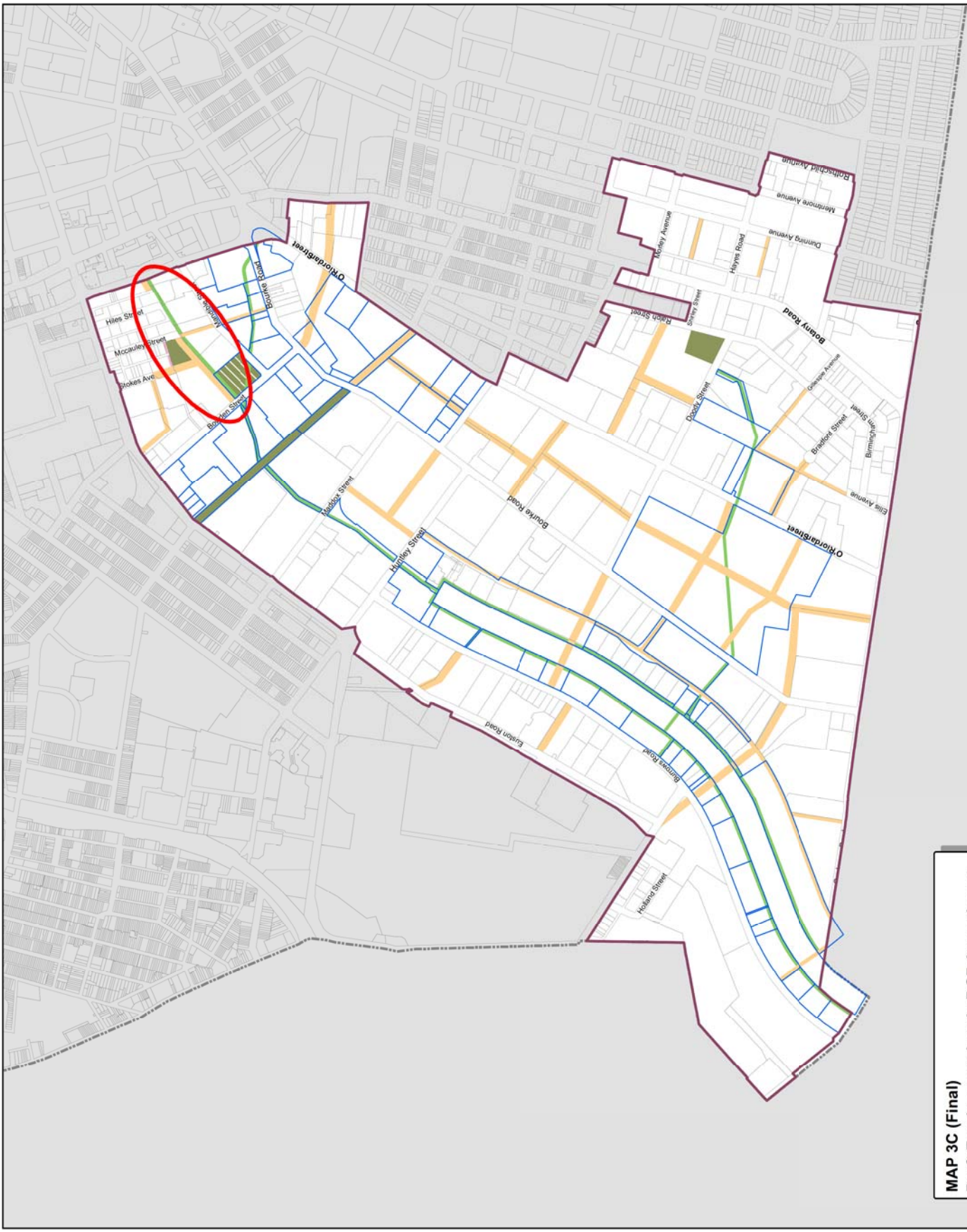


## Proposed open space map

- Legend**
- Employment Lands Strategy boundary
  - Affected sites
  - Required open space
  - Detention (open space)
  - Liveable Green Network (linear park)
  - Proposed streets



Copyright © 2014 City of Sydney Council. All Rights Reserved.  
 Preparation: U3A, Zone 06  
 Author: U3A  
 Date: 10/10/2014  
 File: D:\C:\Users\U3A\Documents\DCP\DCP03\Map03\DCP03\_Map03\_ProposedOpenSpace.dwg  
 Date of any map alterations: No part of this map may be reproduced without written permission.  
 .dwg.mxd



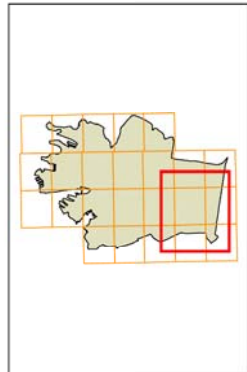
**MAP 3C (Final)**  
**Draft Employment Lands DCP Amendment**  
**Proposed Open Space**

# Sydney Development Control Plan 2012

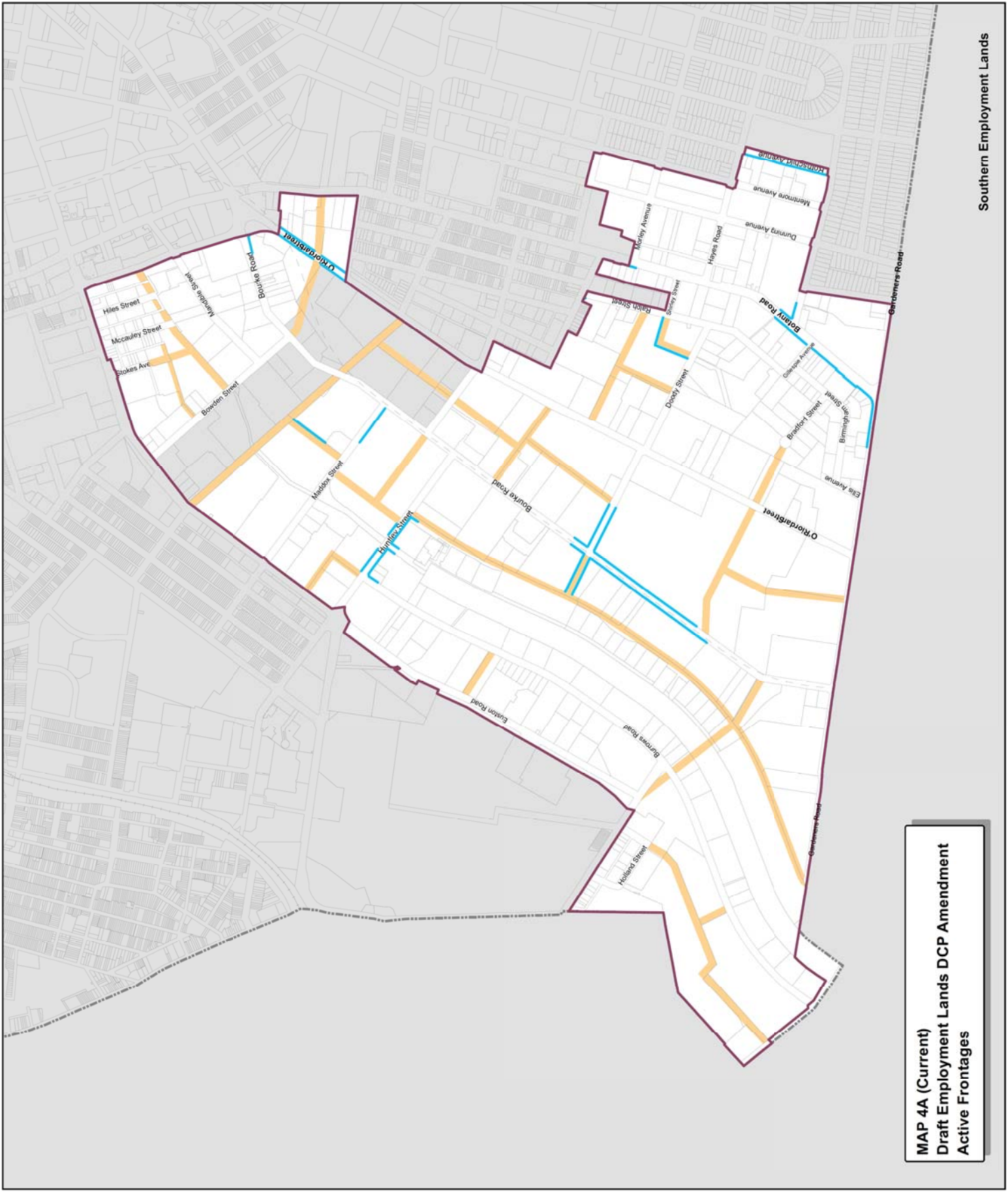


## Active frontages map

- Legend**
- Employment Lands Strategy boundary
  - Active frontages
  - Proposed streets
  - Proposed lane
  - Land excluded from this DCP



Copyright ©2012 City of Sydney Council. All Rights Reserved.  
 Copyright ©2012 Land and Property Information, All Rights Reserved.  
 and the publisher and/or contributor accept no responsibility for any errors or omissions that may appear in this publication.  
 File: D:\C:\Users\p50000001\My Documents\DCP\DCP12\DCP12\_ActiveFrontages\_Current.mxd  
 Date: 11/08/2012 11:58:11 AM  
 E:\S:\DCP12\DCP12\_ActiveFrontages\_Current.mxd  
 Reproduced without further permission.



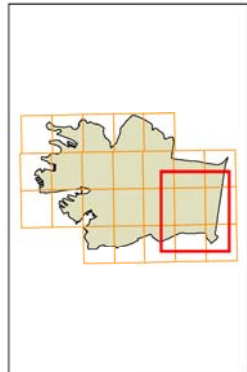
**MAP 4A (Current)**  
**Draft Employment Lands DCP Amendment**  
**Active Frontages**

# Sydney Development Control Plan 2012

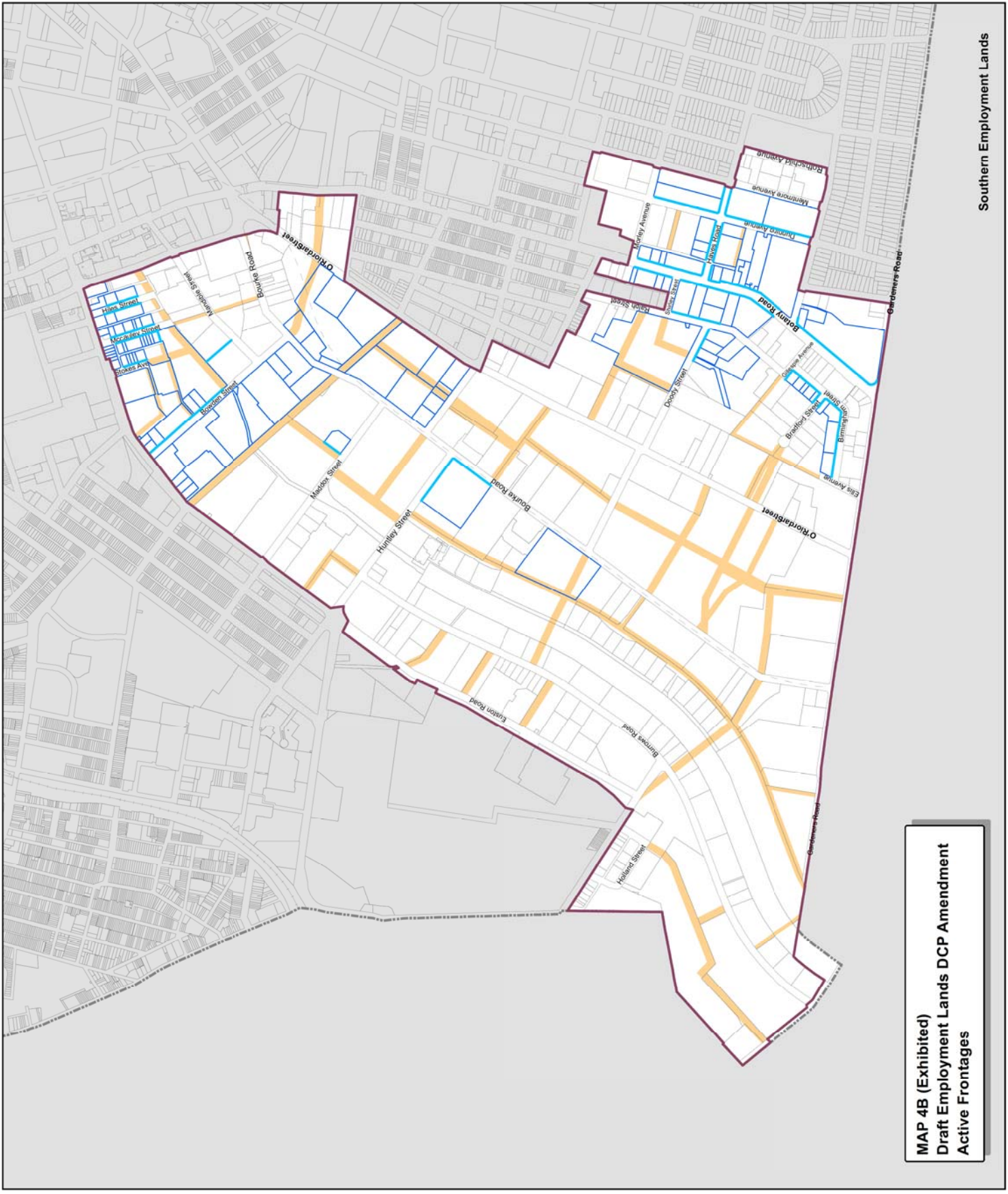


## Active frontages map

- Legend**
- Employment Lands Strategy boundary
  - Affected sites
  - Active frontages
  - Proposed streets



Copyright ©2014 City of Sydney Council. All Rights Reserved.  
 This document is the property of the City of Sydney Council. It is loaned to you for your information only. It is not to be reproduced, stored in a retrieval system, or transmitted in any form or by any means, electronic, mechanical, photocopying, recording, or by any information storage and retrieval system, without the prior written permission of the City of Sydney Council.  
 File: D:\CityPlan\2012\DCP\2012\DCP12001\MXD\DCP12001\_012\_ActiveFrontages\_2012.mxd  
 Date: 12/01/2014 11:14:14 AM  
 User: ELS\_2007212\_ActiveFrontages\_2012.mxd



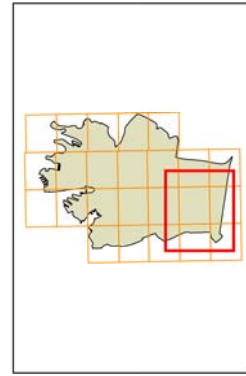
**MAP 4B (Exhibited)**  
**Draft Employment Lands DCP Amendment**  
**Active Frontages**

# Sydney Development Control Plan 2012

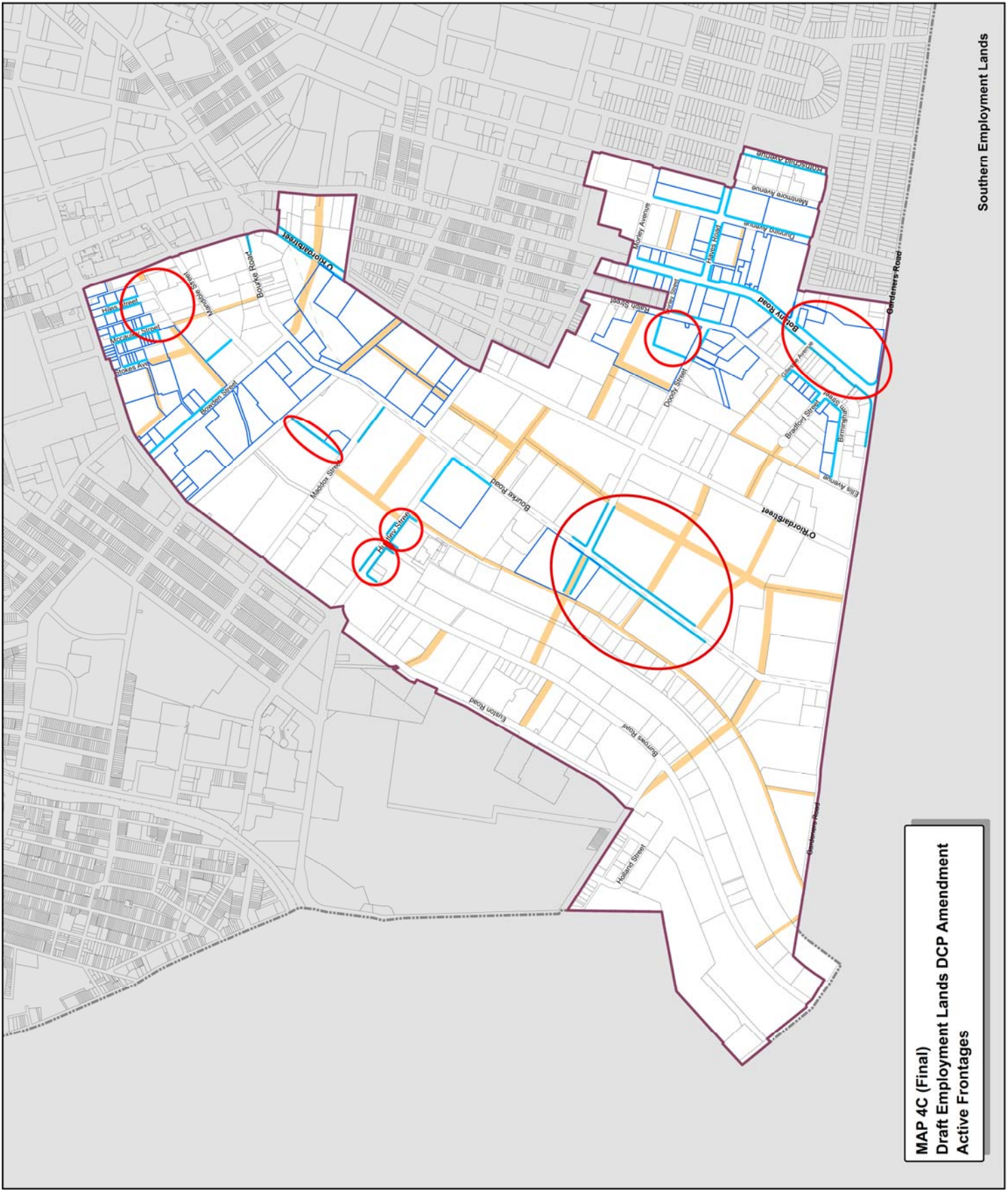


## Active frontages map

- Legend**
- Employment Lands Strategy boundary
  - Affected sites
  - Active frontages
  - Proposed streets



Copyright ©2014 City of Sydney Council. All Rights Reserved.  
 Prepared by: SP/2014  
 File: D:\C:\p\maps\DCP\DCP02014\MAP04\_4C\_ActiveFrontages\_A3.mxd  
 ELS: BDC02912\_ActiveFrontages\_A3.mxd  
 Reproduced without written permission.

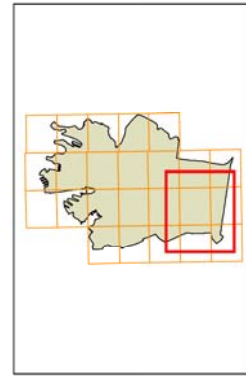


**MAP 4C (Final)**  
**Draft Employment Lands DCP Amendment**  
**Active Frontages**

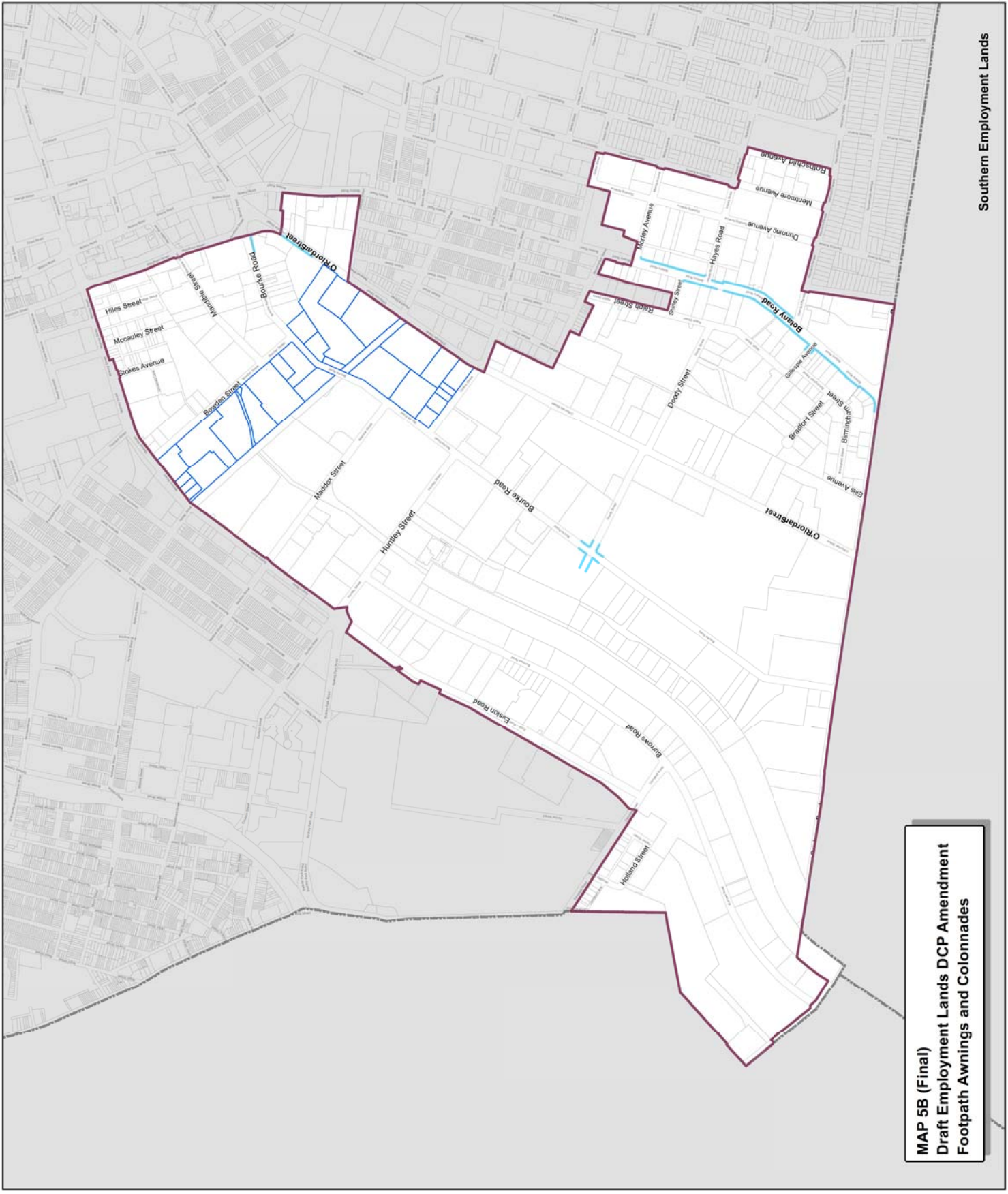


**Footpath awnings and colonnades  
map**

- Legend**
- Employment Lands Strategy boundary
  - Affected sites
  - Awning over entries
  - Colonnades
  - Continuous awning



Copyright ©2012 City of Sydney Council. All Rights Reserved. Publication: SDA\_Zone 5B  
 Copyright ©2012 Land and Property Information. All Rights Reserved. Diagram: GD004  
 and the publisher and/or contributor accept no responsibility for any errors or omissions in this publication.  
 Sydney City Council, PO Box 971, Sydney NSW 1587. Phone: 02 9550 6200. Fax: 02 9550 6201. Email: info@cityofsydney.nsw.gov.au  
 Date of any map alterations: No part of this map may be reproduced without written permission.  
 \_final.indd



**MAP 5B (Final)**  
**Draft Employment Lands DCP Amendment**  
**Footpath Awnings and Colonnades**

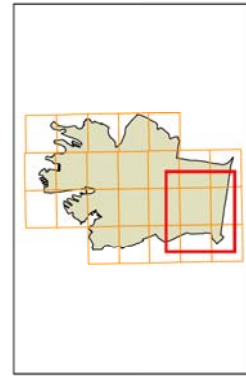


# Sydney Development Control Plan 2012

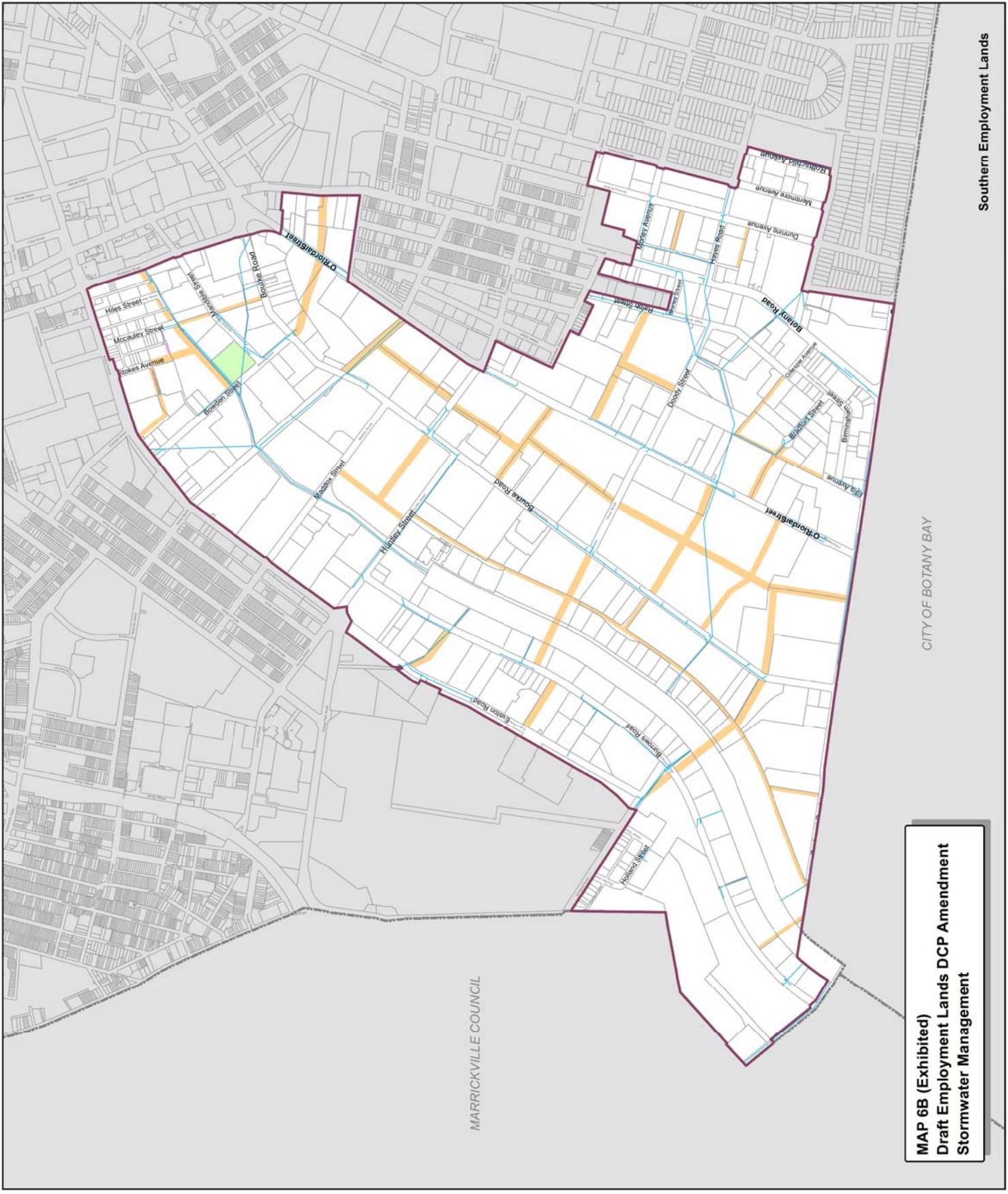


## Stormwater management map

- Legend**
- Employment Lands Strategy boundary
  - Affected sites
  - Site where stormwater detention is integrated with and/or dedicated open space
  - Major drainage lines (position indicative only)
  - Proposed streets



Copyright ©2012 City of Sydney Council. All Rights Reserved.  
 Projection: MGA Zone 56  
 Datum: GDA94  
 Prepared by: Strategic Planning & Urban Design  
 File: D:\C:\Program Files\GIS\MapInfo\MapInfo\Projects\DCP2012\MapInfo\DCP2012\_Sydney\MapInfo\DCP2012\_Sydney.mxd  
 Date of any map alterations: No part of this map may be reproduced without written permission.



**MAP 6B (Exhibited)**  
**Draft Employment Lands DCP Amendment**  
**Stormwater Management**

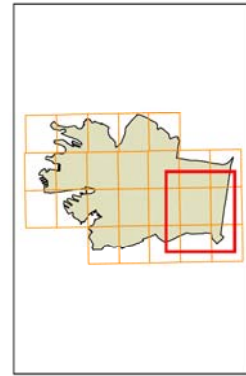


# Sydney Development Control Plan 2012

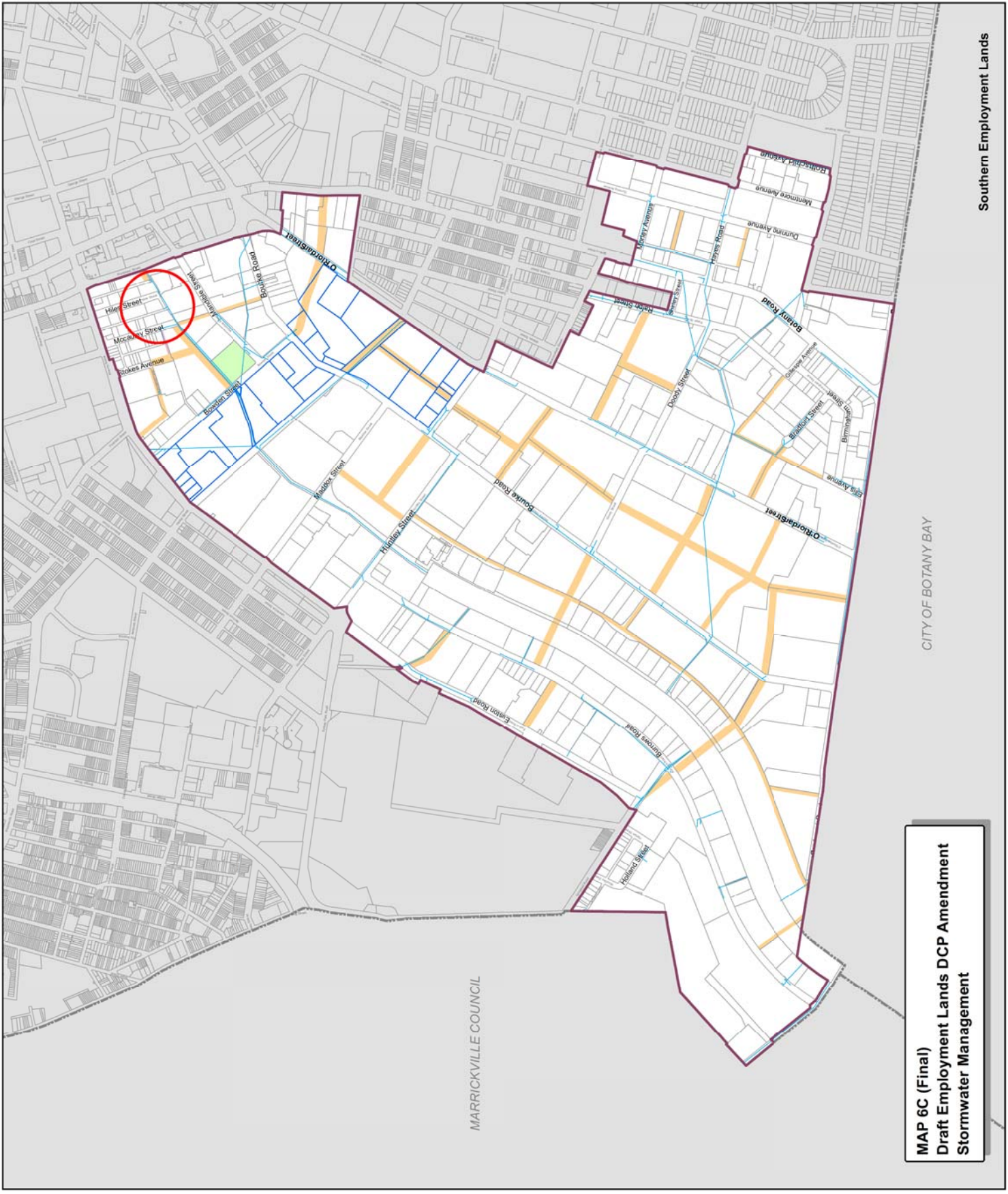


## Stormwater management map

- Legend**
- Employment Lands Strategy boundary
  - Affected sites
  - Site where stormwater detention is integrated with and/or dedicated open space
  - Major drainage lines (position indicative only)
  - Proposed streets



Copyright ©2012 City of Sydney Council. All Rights Reserved.  
 Projection: MGA Zone 56  
 Datum: GDA94  
 Prepared by: Strategic Planning & Urban Design  
 File: D:\C:\Program Files\GIS\MapInfo\MapInfo\Projects\DCP2012\MapInfo\DCP2012\_Stormwater.mxd  
 Date: 11/01/2012 11:00:00 AM  
 All other rights reserved. No part of this map may be reproduced without written permission.



**MAP 6C (Final)**  
**Draft Employment Lands DCP Amendment**  
**Stormwater Management**

Southern Employment Lands